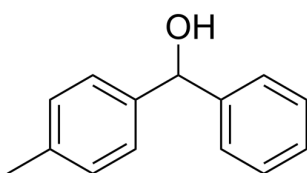


Certificate of Analysis

Compound Information

| | |
|----------------------------|-----------------------------------|
| Product Name: | Phenyl(p-tolyl)methanol |
| Cat. No.: | 1244045 |
| CAS No.: | 1517-63-1 |
| Molecular Formula: | C ₁₄ H ₁₄ O |
| Molecular Weight: | 198.26 |
| Chemical Structure: | |



Batch Information

| | |
|---------------------|---------------------------|
| Batch No.: | Le061575937 |
| Storage: | Store at room temperature |
| Test Date: | 2021-06-15 |
| Retest Date: | 2026-06-14 |
| Origin: | Shanghai, China |

QC Summary

| | |
|--------------------|---|
| Appearance: | White to off-white (Solid) |
| Purity: | ≥98.0% |
| Conclusion: | The product has been tested and complies with the given specifications. |

Caution: Research use only and are not intended for human use.

Tel: 400-821-0725

E-mail: product@leyan.com

Address: No. 1999 Zhangheng Road, Building 3, Zhangjiang High-Tech Park, Shanghai