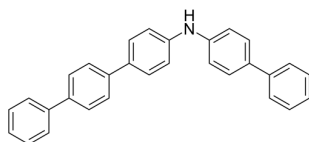


## Certificate of Analysis

### Compound Information

|                            |  |
|----------------------------|--|
| <b>Product Name:</b>       | N-([1,1'-Biphenyl]-4-yl)-[1,1':4',1''-terphenyl]-4-amine |
| <b>Cat. No.:</b>           | 1251646  |
| <b>CAS No.:</b>            | 897921-63-0  |
| <b>Molecular Formula:</b>  | C <sub>30</sub> H <sub>23</sub> N                        |
| <b>Molecular Weight:</b>   | 397.51   |
| <b>Chemical Structure:</b> |  |



### Batch Information

|                     |                           |
|---------------------|---------------------------|
| <b>Batch No.:</b>   | Le071580237               |
| <b>Storage:</b>     | 2-8°C, protect from light |
| <b>Mfg. Date:</b>   | 2021-07-15                |
| <b>Retest Date:</b> | 2024-07-14                |
| <b>Origin:</b>      | Shanghai, China           |

### QC Summary

|                                    |   |
|------------------------------------|---|
| <b>Appearance:</b>                 | Light yellow to green yellow (Solid)                                    |
| <b><sup>1</sup>H NMR Spectrum:</b> | Consistent with structure   |
| <b>Purity (NMR):</b>               | ≥95.0%  |
| <b>Conclusion:</b>                 | The product has been tested and complies with the given specifications. |

**Caution: Research use only and are not intended for human use.**

Tel: 400-821-0725

E-mail: [product@leyan.com](mailto:product@leyan.com)

Address: No. 1999 Zhangheng Road, Building 3, Zhangjiang High-Tech Park, Shanghai