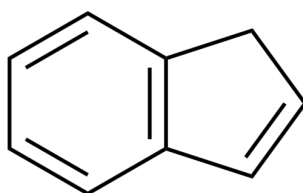


Certificate of Analysis

Compound Information

| | |
|----------------------------|-------------------------------|
| Product Name: | Indene |
| Cat. No.: | 1268753 |
| CAS No.: | 95-13-6 |
| Molecular Formula: | C ₉ H ₈ |
| Molecular Weight: | 116.16 |
| Chemical Structure: | |



Batch Information

| | |
|---------------------|---------------------|
| Batch No.: | Le081995076 |
| Storage: | Storage temp. 2-8°C |
| Mfg. Date: | 2021-08-20 |
| Retest Date: | 2024-08-19 |
| Origin: | Shanghai, China |

QC Summary

| | |
|------------------------------------|---|
| Appearance: | Light brown to brown (Liquid) |
| ¹H NMR Spectrum: | Consistent with structure |
| Purity (HPLC): | 98.92% |
| Conclusion: | The product has been tested and complies with the given specifications. |

Caution: Research use only and are not intended for human use.

Tel: 400-821-0725

E-mail: product@leyan.com

Address: No. 1999 Zhangheng Road, Building 3, Zhangjiang High-Tech Park, Shanghai