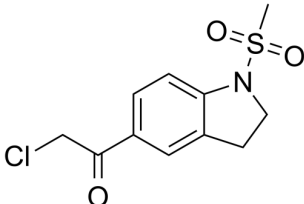
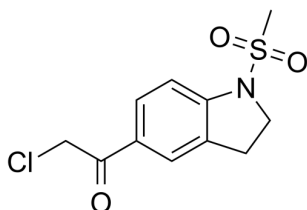


## Certificate of Analysis

### Compound Information

<b>Product Name:</b>	2-Chloro-1-(1-(methylsulfonyl)indolin-5-yl)ethanone
<b>Cat. No.:</b>	1283724
<b>CAS No.:</b>	851288-79-4
<b>Molecular Formula:</b>	C <sub>11</sub> H <sub>12</sub> ClNO <sub>3</sub> S
<b>Molecular Weight:</b>	273.74
<b>Chemical Structure:</b>	



### Batch Information

<b>Batch No.:</b>	Lg0925308613
<b>Storage:</b>	Storage temp. 2-8°C
<b>Test Date:</b>	2023-09-26
<b>Retest Date:</b>	2026-09-25
<b>Origin:</b>	Shanghai, China

### QC Summary

<b>Appearance:</b>	Off-white to light brown (Solid)
<b>Purity:</b>	≥95.0%
<b>Conclusion:</b>	The product has been tested and complies with the given specifications.

**Caution: Research use only and are not intended for human use.**

Tel: 400-821-0725

E-mail: [product@leyan.com](mailto:product@leyan.com)

Address: No. 1999 Zhangheng Road, Building 3, Zhangjiang High-Tech Park, Shanghai