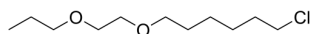


## Certificate of Analysis

### Compound Information

<b>Product Name:</b>	1-Chloro-6-(2-propoxyethoxy)hexane
<b>Cat. No.:</b>	1327141
<b>CAS No.:</b>	1344318-47-3
<b>Molecular Formula:</b>	C <sub>11</sub> H <sub>23</sub> ClO <sub>2</sub>
<b>Molecular Weight:</b>	222.75
<b>Chemical Structure:</b>	



### Batch Information

<b>Batch No.:</b>	Lg1005309830
<b>Storage:</b>	Storage temp. 2-8°C
<b>Test Date:</b>	2022-08-02
<b>Retest Date:</b>	2025-08-01
<b>Origin:</b>	Shanghai, China

### QC Summary

<b>Appearance:</b>	Colorless to light yellow (Liquid)
<b>Purity (GC):</b>	98.27%
<b>Conclusion:</b>	The product has been tested and complies with the given specifications.

**Caution: Research use only and are not intended for human use.**

Tel: 400-821-0725

E-mail: [product@leyan.com](mailto:product@leyan.com)

Address: No. 1999 Zhangheng Road, Building 3, Zhangjiang High-Tech Park, Shanghai