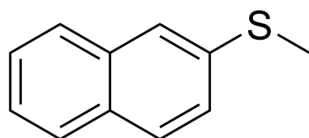


## Certificate of Analysis

### Compound Information

<b>Product Name:</b>	Methyl(naphthalen-2-yl)sulfane
<b>Cat. No.:</b>	1438928
<b>CAS No.:</b>	7433-79-6
<b>Molecular Formula:</b>	C <sub>11</sub> H <sub>10</sub> S
<b>Molecular Weight:</b>	174.26
<b>Chemical Structure:</b>	



### Batch Information

<b>Batch No.:</b>	Lf0712146194
<b>Storage:</b>	2-8°C, stored under nitrogen
<b>Test Date:</b>	2022-07-12
<b>Retest Date:</b>	2025-07-11
<b>Origin:</b>	Shanghai, China

### QC Summary

<b>Appearance:</b>	White to off-white (Solid)
<b>Purity:</b>	≥99.0%
<b>Conclusion:</b>	The product has been tested and complies with the given specifications.

**Caution: Research use only and are not intended for human use.**

Tel: 400-821-0725

E-mail: [product@leyan.com](mailto:product@leyan.com)

Address: No. 1999 Zhangheng Road, Building 3, Zhangjiang High-Tech Park, Shanghai