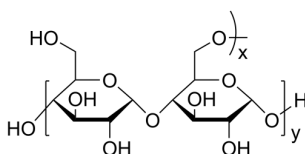


## Certificate of Analysis

### Compound Information

<b>Product Name:</b>	Maltodextrin, dextrose equivalent 16.5-19.5
<b>Cat. No.:</b>	1446745
<b>CAS No.:</b>	9050-36-6
<b>Molecular Formula:</b>	$(C_6H_{10}O_5)_n \cdot xH_2O$
<b>Chemical Structure:</b>	



### Batch Information

<b>Batch No.:</b>	Lg0321225513
<b>Storage:</b>	Storage temp. 2-8°C
<b>Test Date:</b>	2023-03-21
<b>Retest Date:</b>	2026-03-20
<b>Origin:</b>	Shanghai, China

### QC Summary

<b>Appearance:</b>	White to off-white (Solid)
<b>Moisture:</b>	5.10%
<b>Ph:</b>	5.60
<b>DE Value:</b>	18.30%
<b>Sulfated Ash:</b>	0.05%
<b>As:</b>	0.03 mg/kg
<b>Pb:</b>	0.06 mg/kg
<b>Bacterium total:</b>	<10 cfu/g
<b>E.coll:</b>	<30 MPN100g
<b>Conclusion:</b>	The product has been tested and complies with the given specifications.

**Caution: Research use only and are not intended for human use.**

Tel: 400-821-0725

E-mail: [product@leyan.com](mailto:product@leyan.com)

Address: No. 1999 Zhangheng Road, Building 3, Zhangjiang High-Tech Park, Shanghai