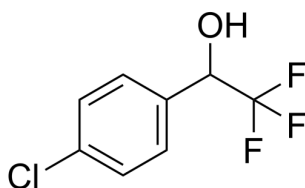


## Certificate of Analysis

### Compound Information

<b>Product Name:</b>	1-(4-Chlorophenyl)-2,2,2-trifluoroethanol
<b>Cat. No.:</b>	1446854
<b>CAS No.:</b>	446-66-2
<b>Molecular Formula:</b>	C <sub>8</sub> H <sub>6</sub> ClF <sub>3</sub> O
<b>Molecular Weight:</b>	210.58
<b>Chemical Structure:</b>	



### Batch Information

<b>Batch No.:</b>	Lf0225123911
<b>Storage:</b>	Store at room temperature
<b>Test Date:</b>	2022-02-25
<b>Retest Date:</b>	2027-02-24
<b>Origin:</b>	Shanghai, China

### QC Summary

<b>Appearance:</b>	White to light yellow (Solid)
<b><sup>1</sup>H NMR Spectrum:</b>	Consistent with structure
<b>Purity (GC):</b>	≥97.0%
<b>OR(C=0.53g/100ml CH<sub>2</sub>CL<sub>2</sub>):</b>	-0.1°
<b>Conclusion:</b>	The product has been tested and complies with the given specifications.

**Caution: Research use only and are not intended for human use.**

Tel: 400-821-0725

E-mail: [product@leyan.com](mailto:product@leyan.com)

Address: No. 1999 Zhangheng Road, Building 3, Zhangjiang High-Tech Park, Shanghai