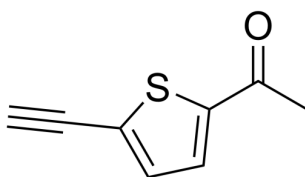


## Certificate of Analysis

### Compound Information

|                            |                                       |
|----------------------------|---------------------------------------|
| <b>Product Name:</b>       | 1-(5-Ethynylthiophen-2-yl)ethan-1-one |
| <b>Cat. No.:</b>           | 1605372                               |
| <b>CAS No.:</b>            | 658701-97-4                           |
| <b>Molecular Formula:</b>  | C <sub>8</sub> H <sub>6</sub> OS      |
| <b>Molecular Weight:</b>   | 150.20                                |
| <b>Chemical Structure:</b> |                                       |



### Batch Information

|                     |                              |
|---------------------|------------------------------|
| <b>Batch No.:</b>   | Lf0724148514                 |
| <b>Storage:</b>     | 2-8°C, stored under nitrogen |
| <b>Test Date:</b>   | 2022-07-30                   |
| <b>Retest Date:</b> | 2025-07-29                   |
| <b>Origin:</b>      | Shanghai, China              |

### QC Summary

|                                    |   |
|------------------------------------|---|
| <b>Appearance:</b>                 | Brown to reddish brown (Solid)  |
| <b><sup>1</sup>H NMR Spectrum:</b> | Consistent with structure   |
| <b>Purity (GC):</b>                | 98.98%  |
| <b>Conclusion:</b>                 | The product has been tested and complies with the given specifications. |

**Caution: Research use only and are not intended for human use.**

Tel: 400-821-0725

E-mail: [product@leyan.com](mailto:product@leyan.com)

Address: No. 1999 Zhangheng Road, Building 3, Zhangjiang High-Tech Park, Shanghai