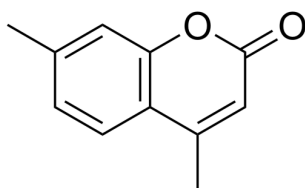


Certificate of Analysis

Compound Information

| | |
|----------------------------|--|
| Product Name: | 4,7-Dimethyl-2H-chromen-2-one |
| Cat. No.: | 1612032 |
| CAS No.: | 14002-90-5 |
| Molecular Formula: | C ₁₁ H ₁₀ O ₂ |
| Molecular Weight: | 174.20 |
| Chemical Structure: | |



Batch Information

| | |
|---------------------|---------------------------|
| Batch No.: | L402207 |
| Storage: | Store at room temperature |
| Test Date: | 2023-12-13 |
| Retest Date: | 2028-12-12 |
| Origin: | Shanghai, China |

QC Summary

| | |
|------------------------------------|---|
| Appearance: | White to off-white (Solid) |
| ¹H NMR Spectrum: | Consistent with structure |
| Purity (HPLC): | 99.98% |
| Conclusion: | The product has been tested and complies with the given specifications. |

Caution: Research use only and are not intended for human use.

Tel: 400-821-0725

E-mail: product@leyan.com

Address: No. 1999 Zhangheng Road, Building 3, Zhangjiang High-Tech Park, Shanghai