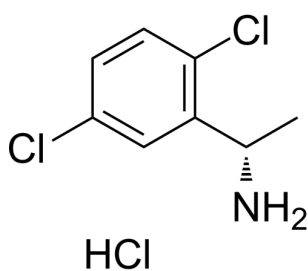


## Certificate of Analysis

### Compound Information

|                            |  |
|----------------------------|--|
| <b>Product Name:</b>       | (S)-1-(2,5-Dichlorophenyl)ethanamine hydrochloride |
| <b>Cat. No.:</b>           | 1684312  |
| <b>CAS No.:</b>            | 1391506-72-1                                       |
| <b>Molecular Formula:</b>  | C <sub>8</sub> H <sub>10</sub> Cl <sub>3</sub> N   |
| <b>Molecular Weight:</b>   | 226.53   |
| <b>Chemical Structure:</b> |  |



### Batch Information

|                     |  |
|---------------------|--|
| <b>Batch No.:</b>   | Lf0927171601                                 |
| <b>Storage:</b>     | Store at room temperature, keep dry and cool |
| <b>Mfg. Date:</b>   | 2022-09-28                                   |
| <b>Retest Date:</b> | 2025-09-27                                   |
| <b>Origin:</b>      | Shanghai, China                              |

### QC Summary

|                                    |   |
|------------------------------------|---|
| <b>Appearance:</b>                 | White to off-white (Solid)  |
| <b><sup>1</sup>H NMR Spectrum:</b> | Consistent with structure   |
| <b>Purity (HPLC):</b>              | 95.29%  |
| <b>Conclusion:</b>                 | The product has been tested and complies with the given specifications. |

**Caution: Research use only and are not intended for human use.**

Tel: 400-821-0725

E-mail: [product@leyan.com](mailto:product@leyan.com)

Address: No. 1999 Zhangheng Road, Building 3, Zhangjiang High-Tech Park, Shanghai